

**The compression
of a lag screw
with the simplicity
of a K-wire**

Fragment Fixation System



For bone fragments in upper and lower limbs

Excellent stability

guaranteed by fine thread and unique design

Compression possible between fragments

No pre-drilling or pre-tapping required

percutaneous insertion

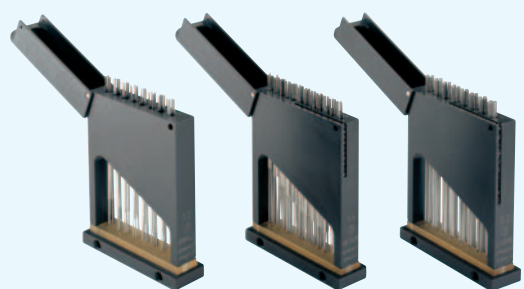
Simplicity saves operative time

All implants 120 mm long in a variety of thread lengths

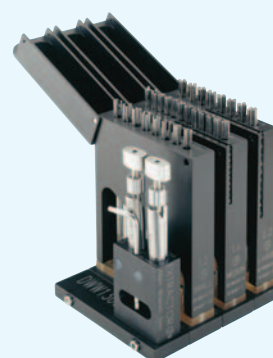
cut to length after insertion

Medium and large sizes

can be combined with a washer to improve cortical contact



Boxes for medium and large implants are designed with an integral slot to contain washers



For storage and ease of intra-operative handling, four dispenser-sterilization boxes are supplied

Size	Thread diameter	Shaft diameter
Small	1,2 mm	1,5 mm
Medium	1,6 mm	2,0 mm
Large	2,2 mm	3,0 mm

Ordering Information

Code No	Description
W1300	F.F.S. Complete Kit
For further ordering information see section "Fragment Fixation System" in the Orthofix General Catalogue	

See Quick Reference Guide PG 160

References:

- 1) T. Gausepohl and D. Pennig: "The Fragment Fixation System in Intra-Articular and Periarticular Fractures" Orthofix External Fixation in Trauma and Orthopaedics, G. De Bastiani et al., Springer 2000, 3: 375-95
- 2) T. Gausepohl et al.: "Fine Thread Versus Coarse Thread. A Comparison of the Maximum Holding Power". Injury, 32 (2001) S-D-1-S-D-7
- 3) Rovinsky D. et al.: "Evaluation of a New Method of Small Fragment Fracture Fixation" JOT 2000, 14 (6): 420-25
- 4) Sinha S., Campbell AC "Orthofix Pin: A Method of Small Bone Fragment Stabilisation." Injury, 2000 Oct; 31 (8): 631-633.