

The advertisement features a large, detailed image of a BioDrive cannulated screw in the upper right quadrant, set against a blue background. The screw has a threaded shaft and a hexagonal head. In the background, a semi-transparent image shows a surgical team in an operating room, with surgeons wearing masks and caps, focused on a patient. The overall color scheme is dominated by shades of blue, with a red and white horizontal bar at the bottom.

BioDrive[®]

Cannulated Screw System

Joint Replacement

Cement

BioMaterials

Spine

Trauma





Disclaimer

Biomet Merck Ltd, as the manufacturer of this device, does not practice medicine and does not recommend this or any other surgical technique for use on a specific patient. The surgeon who performs any procedure is responsible for determining and utilising the appropriate techniques for such procedure for each individual patient. Biomet Merck Ltd is not responsible for selection of the appropriate surgical technique to be utilised for and individual patient.



BioDrive

Surgical Technique

Contents

System Overview.....	0.2
Implant Overview.....	0.3
Surgical Technique.....	0.4
Indications.....	0.6
Indication Guide.....	0.9
Mantis Tongs.....	0.19

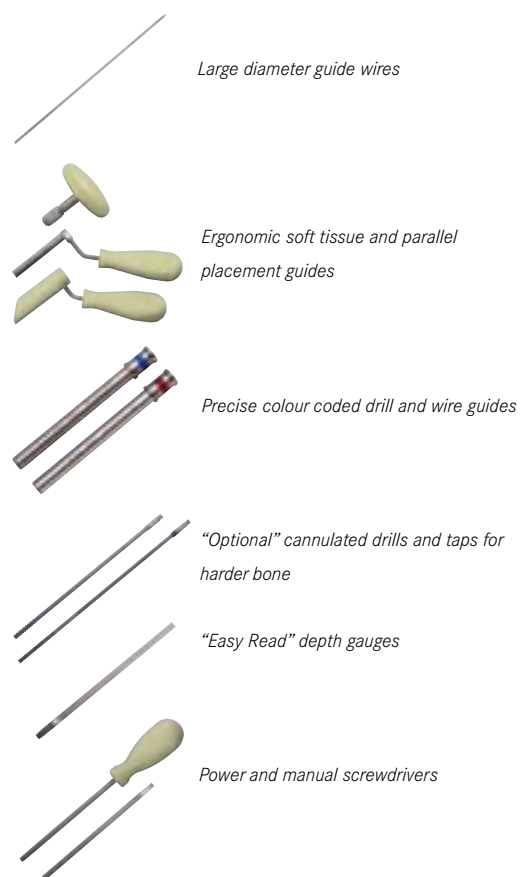
BioDrive

System Overview

Implants

- Self-drilling, self-tapping design reduces procedure time and instrument complications.
- The special tri-fluted cutting head will cut a pathway for the screw even in harder bone.
- Reverse cutting flutes facilitate implant removal in hard bone.
- Large diameter guide wires provide accurate insertion.
- Implant are designed to have high pull-out and torsional strengths.
- Implants can be used with appropriate buttress plates from the Biomet Merck Small, Foot, Basic and Pelvic Fragment Sets, as well as the HipLoc/SupraLoc compression hip screw, and BMP Cable Plate System.
- The system is modular and can be adapted to specific surgical requirements.

Instruments



Modular Components

Codes: 470481, 470483, 470485, 470487



Modular Components

Codes: 470369, 470371, 470373



Modular Components

Codes: 470489, 470491, 470494, 470493



Implant Overview



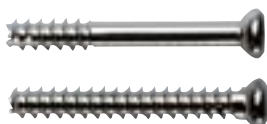
2.8mm
Cannulated Screw
Cannulation 1.2mm
Thread length 10mm
Guide wire 1.1mm
Core diameter 2.1mm
Screwdriver 2.5mm
Lengths 10mm-30mm
(2mm increments)
Thread type cortical
(part threaded).



3.5mm
Cannulated Screw
Cannulation 1.8mm
Thread length 10mm and
full guide wire 1.6mm
Core diameter 3.0mm
Screwdriver 2.5mm
Lengths 10mm-54mm
(2mm increments)
Thread type cortical
(full & part threaded).



4.0mm
Cannulated Screw
Cannulation 1.8mm
Thread length 10mm and
full guide wire 1.6mm
Core diameter 3.5mm
Screwdriver 2.5mm
Length 10mm-40mm
(2mm increments)
Thread type cancellous
(full & part threaded).



4.5mm
Cannulated Screw
Cannulation 2.0mm
Thread length 20mm and
Full Guide wire 1.8mm
Core diameter 3.5mm
Screwdriver 3.5mm
Lengths 20mm-64mm (2mm increments)
Thread type cortical (full & part threaded).



5.0mm
Cannulated Screw
Cannulation 2.0mm
Thread length 20mm
Guide wire 1.8mm
Core diameter 3.5mm
Screwdriver 3.5mm
Lengths 22mm-70mm (2mm increments)
Thread type cancellous (part threaded).



7.5mm Cannulated Screw
Cannulation 3.4mm
Thread length 16mm, 32mm & full
Guide wire 3.2mm
Core diameter 4.5mm
Screwdriver 5.0mm
Lengths 10mm-30mm (2mm increments)
Thread type cancellous (full and part threaded).

6.5mm Cannulated Screw

Cannulation 3.4mm
Thread length 16mm and 3.2mm
Core diameter 4.5mm
Screwdriver 5.0mm
Lengths 10mm-30mm (2mm increments)
Thread type cancellous (part threaded).



Washers

Small Washer for 2.8mm, 3.5mm
and 4.0mm screws (1901-71)
Intermediate Washer for 4.5mm
and 5.0mm screws (1901-68)
Large Washer for 6.5mm and 7.5mm
screws (1901-69).

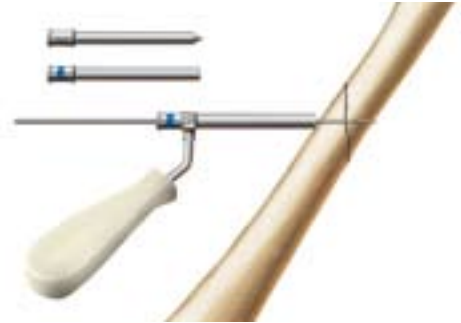
BioDrive

Surgical Technique

Step 1.0

Insert the Guide Wire

Make the exposure of the fracture site and reduce the fracture. An entry point for the definitive guide wire can be made using the soft tissue sleeve and trocar. Exchange the trocar for the pin sleeve and insert the definitive guide wire.



Step 2.0

Measure the Screw Length

Measure the screw length using the depth gauge.



Step 3.0 Optional

Pre-drilling the Bone

In hard bone pre-drilling may be performed to facilitate screw insertion.



Step 4.0 Optional

Pre-tapping the Bone

In hard bone pre-tapping may be performed to facilitate screw insertion. (This does not apply to the 2.8mm screw).





Screw Insertion - Under Power

Insert the appropriate screw under power using the power screw driver. A washer may be used at this stage in osteoporotic bone. Do not fully seat the screw.

Step 5.0



Final Manual-tightening of the Screw

Final insertion and tightening of the screw should be performed manually to avoid stripping the threads of the screw in the bone.

Step 6.0

BioDrive

Indications

2.8mm Cortical Screw Indications

Fractures of the carpals and metacarpals, carpal and metacarpal arthrodesis, radial head fractures, metatarsal osteotomies, small bone fragment fixation in tibia, humerus and femur.



3.5mm Cortical Screw Indications

Fractures of the radial styloid, tarsal and metatarsal fractures, metacarpal fractures, arthrodesis of small joints, metacarpal and metatarsal osteotomies, malleolar fractures, distal humeral fractures.



4.0mm Cancellous Indications

Malleolar fractures, distal humeral fractures, arthrodesis of tarsals and carpals, fractures of the carpals and tarsals, proximal humeral fractures and acetabular fractures.





4.5mm Cortical Indications

Malleolar fractures, tibial plateau fractures, arthrodesis of the carpals and tarsals, acetabular and pelvic fractures, calcaneal fractures, talus fractures, hind foot arthrodesis, proximal and distal humeral fractures.



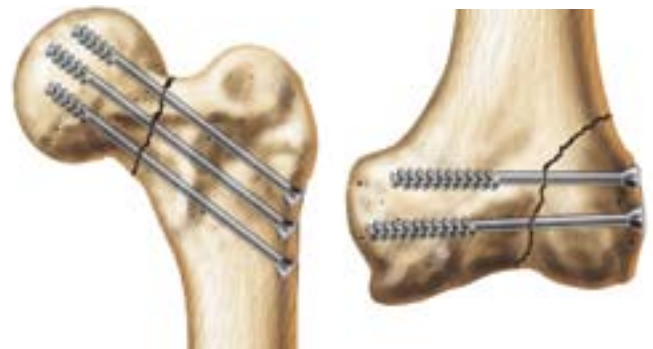
5.0mm Cancellous Indications:

Malleolar fractures, proximal humeral fractures, talus and calcaneous fracture and osteotomies, subtalar arthrodesis, tibial plateau fractures, mid and hind foot arthrodesis, pelvic and acetabular fractures.



6.5mm Cancellous Indications

Intercondylar fractures, tibial plateau fractures, femoral neck fractures, ankle arthrodesis, paediatric femoral neck fractures, subtalar arthrodesis, dipped capital femoral epiphyses sacro-iliac joint disruptions, pelvic and acetabular fractures.



7.5mm Cancellous Indications

Femoral neck fractures, ankle arthrodesis, tibial plateau fractures, intercondylar fractures, pelvic fractures, iliosacral dislocations, slipped capital femoral epiphysis.



BioDrive

Indication Guide

This is not a prescriptive guide to indication selection. Each clinical case must be assessed by the surgeon and the appropriate screw selected based on fracture characteristics, bone quality and other influencing factors.

Site	2.8	3.5	4	4.5	5	6.5	7.5
Distal tibia	SI	I	I	I	I	I	I
Proximal tibia	SI	SI	I	I	I	I	I
Distal femur	SI	SI	SI	I	I	I	I
Proximal femur	SI	SI	SI	I	I	I	I
Pelvis		I	I	I	I	I	I
Acetabulum		SI	I	I	I	SI	SI
Distal humerus	SI	I	I	I	SI		
Proximal humerus	SI	SI	I	I	I	I	SI
Distal ulna	I	I	SI				
Proximal ulna	I	I	SI				
Radial head	I	I	SI				
Distal radius	I	I	SI				
Carpals	I	I	SI				
Tarsals	I	I	SI				
Metacarpals	I	SI	SI				
Metatarsals	I	SI	SI				
Calcaneus	SI	I	I	I	I	I	I
Talus	SI	I	I	I	I	I	I

I = Indications

SI = Special indication strictly dependent upon anatomy

BioDrive Cannulated Screw Ordering Information

Small & Mini Screw Set

Code	Description
470483	Mini Container with Cortical Screws 2.8mm Part Threaded Complete
470485	Mini Container with Cortical Screws 3.5mm Part & Full Threaded Complete
470487	Mini Container with Cortical Screws 4.0mm Part & Full Threaded Complete
470481	BioDrive Mini/Small Instrument Set

Instruments

BioDrive Mini/Small Stainless Screw

Code	Description	Quantity
470481	BioDrive Mini/Small Stainless Steel Screw Set - Complete	
470384	Soft Tissue Guide - Short	1
470387	Trocar - Mini	1
470393	Guide Pin Sleeve 1.1mm	1
470416	Cannulated Tap 2.8mm	1
2905-72	Screw Forceps	1
470390	Depth Gauge - Mini/Small	1
470478	Small Brush	1
4111-111-150	1.1x150mm K-Wire with Trocar (pk 10)	1
4152-111-150	1.1x150mm K-wire with Trocar and Thread (pk 10)	1
470408	AO T-Handle	1
470407	AO Handle with Spinner	1
470406	Screwdriver 2.5mm	1
470400	Power Hex 2.5mm	1
470385	Soft Tissue Guide - Long	1
470388	Trocar - Small	1
470394	Guide Pin Sleeve 1.6mm	1
470397	Drill Sleeve 3.0mm	1
470403	Cannulated Drill 3.0mm	1
470417	Cannulated Tap 3.5mm	1
470418	Cannulated Tap 4.0mm	1
4111-116-150	1.6x150mm K-Wire with Trocar (pk 10)	1
4152-116-150	1.6x150mm K-wire with Trocar and Thread (pk 10)	1
470409	Countersink - Mini/Small	1
470480	BioDrive Mini/Small Set - Case Only	1

2.8mm Screws

BioDrive 2.8mm Cannulated Screws

Code	Description	Length	Quantity
470483	BioDrive 2.8mm Cannulated Screws - Complete Set		
1112-028-010	2.8mm Cortical Screw	10	2
1112-028-012	2.8mm Cortical Screw	12	2
1112-028-014	2.8mm Cortical Screw	14	2
1112-028-016	2.8mm Cortical Screw	16	2
1112-028-018	2.8mm Cortical Screw	18	2
1112-028-020	2.8mm Cortical Screw	20	2
1112-028-022	2.8mm Cortical Screw	22	2
1112-028-024	2.8mm Cortical Screw	24	2
1112-028-026	2.8mm Cortical Screw	26	2
1112-028-028	2.8mm Cortical Screw	28	2
1112-028-030	2.8mm Cortical Screw	30	2
1901-71	Small Washer		6
470482	BioDrive 2.8mm Cannulated Screws - Case Only		1

3.5mm Screws

BioDrive 3.5mm Cannulated Screws (Part and Fully Threaded)

Code	Description	Length	Quantity
470485	BioDrive 3.5mm Cannulated Screws (Part and Fully Threaded) - Complete Set		
1112-035-010	3.5mm Cortical Screw (Part Threaded)	10	2
1112-035-012	3.5mm Cortical Screw (Part Threaded)	12	2
1112-035-014	3.5mm Cortical Screw (Part Threaded)	14	2
1112-035-016	3.5mm Cortical Screw (Part Threaded)	16	2
1112-035-018	3.5mm Cortical Screw (Part Threaded)	18	2
1112-035-020	3.5mm Cortical Screw (Part Threaded)	20	2
1112-035-022	3.5mm Cortical Screw (Part Threaded)	22	2
1112-035-024	3.5mm Cortical Screw (Part Threaded)	24	2
1112-035-026	3.5mm Cortical Screw (Part Threaded)	26	2
1112-035-028	3.5mm Cortical Screw (Part Threaded)	28	2
1112-035-030	3.5mm Cortical Screw (Part Threaded)	30	2
1112-035-032	3.5mm Cortical Screw (Part Threaded)	32	2
1112-035-034	3.5mm Cortical Screw (Part Threaded)	34	2
1112-035-036	3.5mm Cortical Screw (Part Threaded)	36	2
1112-035-038	3.5mm Cortical Screw (Part Threaded)	38	2
1112-035-040	3.5mm Cortical Screw (Part Threaded)	40	2
1112-035-042	3.5mm Cortical Screw (Part Threaded)	42	2
1112-035-044	3.5mm Cortical Screw (Part Threaded)	44	2
1112-035-046	3.5mm Cortical Screw (Part Threaded)	46	2
1112-035-048	3.5mm Cortical Screw (Part Threaded)	48	2
1112-035-050	3.5mm Cortical Screw (Part Threaded)	50	2
1111-035-010	3.5mm Cortical Screw (Full Threaded)	10	2
1111-035-012	3.5mm Cortical Screw (Full Threaded)	12	2
1111-035-014	3.5mm Cortical Screw (Full Threaded)	14	2
1111-035-016	3.5mm Cortical Screw (Full Threaded)	16	2
1111-035-018	3.5mm Cortical Screw (Full Threaded)	18	2
1111-035-020	3.5mm Cortical Screw (Full Threaded)	20	2
1111-035-022	3.5mm Cortical Screw (Full Threaded)	22	2
1111-035-024	3.5mm Cortical Screw (Full Threaded)	24	2
1111-035-026	3.5mm Cortical Screw (Full Threaded)	26	2
1111-035-028	3.5mm Cortical Screw (Full Threaded)	28	2
1111-035-030	3.5mm Cortical Screw (Full Threaded)	30	2
1111-035-032	3.5mm Cortical Screw (Full Threaded)	32	2
1111-035-034	3.5mm Cortical Screw (Full Threaded)	34	2
1111-035-036	3.5mm Cortical Screw (Full Threaded)	36	2
1111-035-038	3.5mm Cortical Screw (Full Threaded)	38	2
1111-035-040	3.5mm Cortical Screw (Full Threaded)	40	2
1111-035-042	3.5mm Cortical Screw (Full Threaded)	42	2
1111-035-044	3.5mm Cortical Screw (Full Threaded)	44	2
1111-035-046	3.5mm Cortical Screw (Full Threaded)	46	2
1111-035-048	3.5mm Cortical Screw (Full Threaded)	48	2
1111-035-050	3.5mm Cortical Screw (Full Threaded)	50	2
1901-71	Small Washer		6
470484	BioDrive 3.5mm Cannulated Screws - Case Only		1

4.0mm Screws

BioDrive 4.0mm Cannulated Screws (Part Threaded and Fully Threaded)

Code	Description	Length	Quantity
470487	BioDrive 4.0mm Cannulated Screws (Part Threaded and Fully Threaded) - Complete Set		
1212-040-010	4.0mm Cancellous Screw (Part Threaded)	10	2
1212-040-012	4.0mm Cancellous Screw (Part Threaded)	12	2
1212-040-014	4.0mm Cancellous Screw (Part Threaded)	14	2
1212-040-016	4.0mm Cancellous Screw (Part Threaded)	16	2
1212-040-018	4.0mm Cancellous Screw (Part Threaded)	18	2
1212-040-020	4.0mm Cancellous Screw (Part Threaded)	20	2
1212-040-022	4.0mm Cancellous Screw (Part Threaded)	22	2
1212-040-024	4.0mm Cancellous Screw (Part Threaded)	24	2
1212-040-026	4.0mm Cancellous Screw (Part Threaded)	26	2
1212-040-028	4.0mm Cancellous Screw (Part Threaded)	28	2
1212-040-030	4.0mm Cancellous Screw (Part Threaded)	30	2
1212-040-032	4.0mm Cancellous Screw (Part Threaded)	32	2
1212-040-034	4.0mm Cancellous Screw (Part Threaded)	34	2
1212-040-036	4.0mm Cancellous Screw (Part Threaded)	36	2
1212-040-038	4.0mm Cancellous Screw (Part Threaded)	38	2
1212-040-040	4.0mm Cancellous Screw (Part Threaded)	40	2
1212-040-042	4.0mm Cancellous Screw (Part Threaded)	42	2
1212-040-044	4.0mm Cancellous Screw (Part Threaded)	44	2
1212-040-046	4.0mm Cancellous Screw (Part Threaded)	46	2
1212-040-048	4.0mm Cancellous Screw (Part Threaded)	48	2
1212-040-050	4.0mm Cancellous Screw (Part Threaded)	50	2
1211-040-010	4.0mm Cancellous Screw (Full Thread)	10	2
1211-040-012	4.0mm Cancellous Screw (Full Thread)	12	2
1211-040-014	4.0mm Cancellous Screw (Full Thread)	14	2
1211-040-016	4.0mm Cancellous Screw (Full Thread)	16	2
1211-040-018	4.0mm Cancellous Screw (Full Thread)	18	2
1211-040-020	4.0mm Cancellous Screw (Full Thread)	20	2
1211-040-022	4.0mm Cancellous Screw (Full Thread)	22	2
1211-040-024	4.0mm Cancellous Screw (Full Thread)	24	2
1211-040-026	4.0mm Cancellous Screw (Full Thread)	26	2
1211-040-028	4.0mm Cancellous Screw (Full Thread)	28	2
1211-040-030	4.0mm Cancellous Screw (Full Thread)	30	2
1211-040-032	4.0mm Cancellous Screw (Full Thread)	32	2
1211-040-034	4.0mm Cancellous Screw (Full Thread)	34	2
1211-040-036	4.0mm Cancellous Screw (Full Thread)	36	2
1211-040-038	4.0mm Cancellous Screw (Full Thread)	38	2
1211-040-040	4.0mm Cancellous Screw (Full Thread)	40	2
1211-040-042	4.0mm Cancellous Screw (Full Thread)	42	2
1211-040-044	4.0mm Cancellous Screw (Full Thread)	44	2
1211-040-046	4.0mm Cancellous Screw (Full Thread)	46	2
1211-040-048	4.0mm Cancellous Screw (Full Thread)	48	2
1211-040-050	4.0mm Cancellous Screw (Full Thread)	50	2
1901-71	Small Washer		6
470486	BioDrive 4.0mm Cannulated Screws - Case Only		1

Instruments

BioDrive Intermediate Stainless Screw Set - Complete

Code	Description	Quantity
470369	BioDrive Intermediate Stainless Screw Set - Complete	
470386	Soft Tissue Guide - Extra Long	1
470411	Hudson T-Handle	1
2905-70	Large Screw Forceps	1
470410	Screwdriver 3.5mm Hex	1
470479	Large Brush	1
470389	Trocar - Large	1
470395	Guide Pin Sleeve 1.8mm	1
470391	Depth Gauge - Intermediate	1
470398	Drill Sleeve 3.5mm	1
470404	Cannulated Drill 3.5mm	1
470419	Cannulated Tap 4.5mm	1
470420	Cannulated Tap 5.0mm	1
470401	Power Hex 3.5mm	1
470477	Double Barrel Pin Guide 1.8mm	1
470412	Countersink - Intermediate	1
4111-118-200	1.8x200mm K-Wire with Trocar (pk 10)	1
4152-118-200	1.8x200mm K-Wire with Trocar & Thread (pk 10)	1
470368	Intermediate Instrument Case Only	1

4.5mm Screws

BioDrive 4.5mm Cannulated Screws

Code	Description	Length	Quantity
470371	BioDrive 4.5mm Cannulated Screws - Complete Set		
1111-045-020	5.0mm Cortical Screw (Full thread)	20	2
1111-045-022	4.5mm Cortical Screw (Full thread)	22	2
1111-045-024	4.5mm Cortical Screw (Full thread)	24	2
1111-045-026	4.5mm Cortical Screw (Full thread)	26	2
1111-045-028	4.5mm Cortical Screw (Full thread)	28	2
1111-045-030	4.5mm Cortical Screw (Full thread)	30	2
1111-045-032	4.5mm Cortical Screw (Full thread)	32	2
1111-045-034	4.5mm Cortical Screw (Full thread)	34	2
1111-045-036	4.5mm Cortical Screw (Full thread)	36	2
1111-045-038	4.5mm Cortical Screw (Full thread)	38	2
1111-045-040	4.5mm Cortical Screw (Full thread)	40	2
1111-045-042	4.5mm Cortical Screw (Full thread)	42	2
1111-045-044	4.5mm Cortical Screw (Full thread)	44	2
1111-045-046	4.5mm Cortical Screw (Full thread)	46	2
1111-045-048	4.5mm Cortical Screw (Full thread)	48	2
1111-045-050	4.5mm Cortical Screw (Full thread)	50	2
1111-045-052	4.5mm Cortical Screw (Full thread)	52	2
1111-045-054	4.5mm Cortical Screw (Full thread)	54	2
1111-045-056	4.5mm Cortical Screw (Full thread)	56	2
1111-045-060	4.5mm Cortical Screw (Full thread)	60	2
1111-045-064	4.5mm Cortical Screw (Full thread)	64	2
1111-045-068	4.5mm Cortical Screw (Full thread)	68	2
1111-045-072	4.5mm Cortical Screw (Full thread)	72	2
1112-045-020	4.5mm Cortical Screw (Partial thread)	20	2
1112-045-022	4.5mm Cortical Screw (Partial thread)	22	2
1112-045-024	4.5mm Cortical Screw (Partial thread)	24	2
1112-045-026	4.5mm Cortical Screw (Partial thread)	26	2
1112-045-028	4.5mm Cortical Screw (Partial thread)	28	2
1112-045-030	4.5mm Cortical Screw (Partial thread)	30	2
1112-045-032	4.5mm Cortical Screw (Partial thread)	32	2
1112-045-034	4.5mm Cortical Screw (Partial thread)	34	2
1112-045-036	4.5mm Cortical Screw (Partial thread)	36	2
1112-045-038	4.5mm Cortical Screw (Partial thread)	38	2
1112-045-040	4.5mm Cortical Screw (Partial thread)	40	2
1112-045-042	4.5mm Cortical Screw (Partial thread)	42	2
1112-045-044	4.5mm Cortical Screw (Partial thread)	44	2
1112-045-046	4.5mm Cortical Screw (Partial thread)	46	2
1112-045-048	4.5mm Cortical Screw (Partial thread)	48	2
1112-045-050	4.5mm Cortical Screw (Partial thread)	50	2
1112-045-052	4.5mm Cortical Screw (Partial thread)	52	2
1112-045-054	4.5mm Cortical Screw (Partial thread)	54	2
1112-045-056	4.5mm Cortical Screw (Partial thread)	56	2
1112-045-060	4.5mm Cortical Screw (Partial thread)	60	2
1112-045-064	4.5mm Cortical Screw (Partial thread)	64	2
1112-045-068	4.5mm Cortical Screw (Partial thread)	68	2
1112-045-072	4.5mm Cortical Screw (Partial thread)	72	2
470370	BioDrive 4.5mm Cannulated Screws-Case Only		1
1901-68	Intermediate Washer		6

5.0mm Screws

BioDrive 5.0mm Cannulated Screws

Code	Description	Length	Quantity
470373	BioDrive 5.0mm Cannulated Screws - Complete Set		
1212-050-022	5.0mm Cancellous Screw (Partial thread)	22	2
1212-050-024	5.0mm Cancellous Screw (Partial thread)	24	2
1212-050-026	5.0mm Cancellous Screw (Partial thread)	26	2
1212-050-028	5.0mm Cancellous Screw (Partial thread)	28	2
1212-050-030	5.0mm Cancellous Screw (Partial thread)	30	2
1212-050-032	5.0mm Cancellous Screw (Partial thread)	32	2
1212-050-034	5.0mm Cancellous Screw (Partial thread)	34	2
1212-050-036	5.0mm Cancellous Screw (Partial thread)	36	2
1212-050-038	5.0mm Cancellous Screw (Partial thread)	38	2
1212-050-040	5.0mm Cancellous Screw (Partial thread)	40	2
1212-050-042	5.0mm Cancellous Screw (Partial thread)	42	2
1212-050-044	5.0mm Cancellous Screw (Partial thread)	44	2
1212-050-046	5.0mm Cancellous Screw (Partial thread)	46	2
1212-050-048	5.0mm Cancellous Screw (Partial thread)	48	2
1212-050-050	5.0mm Cancellous Screw (Partial thread)	50	2
1212-050-055	5.0mm Cancellous Screw (Partial thread)	55	2
1212-050-060	5.0mm Cancellous Screw (Partial thread)	60	2
1212-050-065	5.0mm Cancellous Screw (Partial thread)	65	2
1212-050-070	5.0mm Cancellous Screw (Partial thread)	70	2
470372	BioDrive 5.0mm Cannulated Screws-Case Only		1
1901-68	Intermediate Washer		6

Instruments

BioDrive Large Stainless Steel Screw Set

Code	Description	Quantity
470489	BioDrive Large Stainless Steel Screw Set - Complete	
470423	Parallel Drill Guide	1
470386	Soft Tissue Guide - Extra Long	1
470411	Hudson T-Handle	1
470414	Screwdriver 5.0mm Hex	1
2905-70	Large Screw Forceps	1
470479	Large Brush	1
470389	Trocar - Large	1
470396	Guide Pin Sleeve 3.2mm	1
470392	Depth Gauge - Large	1
470399	Drill Sleeve 4.5mm	1
470405	Cannulated Drill 4.5mm	1
470421	Cannulated Tap 6.5mm	1
470422	Cannulated Tap 7.5mm	1
470402	Power Hex 5.0mm	1
470424	Double Barrel Pin Guide 3.2mm	1
470415	Countersink - Large	1
4111-132-250	3.2x250mm K-Wire with Trocar (pk 10)	1
4152-132-250	3.2x250mm K-wire with Trocar and Thread (pk 10)	1
470488	BioDrive Large Set - Case Only	1

6.5mm Screws

BioDrive Cannulated Screws 6.5mm Part Thread 16mm & 32mm Complete

Code	Description	Length	Quantity
470491	BioDrive 6.5mm Cannulated Screws - Complete Set		
1213-065-030	6.5mm Cancellous Screw (16mm Thread)	30	2
1213-065-035	6.5mm Cancellous Screw (16mm Thread)	35	2
1213-065-040	6.5mm Cancellous Screw (16mm Thread)	40	2
1213-065-045	6.5mm Cancellous Screw (16mm Thread)	45	2
1213-065-050	6.5mm Cancellous Screw (16mm Thread)	50	2
1213-065-055	6.5mm Cancellous Screw (16mm Thread)	55	2
1213-065-060	6.5mm Cancellous Screw (16mm Thread)	60	2
1213-065-065	6.5mm Cancellous Screw (16mm Thread)	65	2
1213-065-070	6.5mm Cancellous Screw (16mm Thread)	70	3
1213-065-075	6.5mm Cancellous Screw (16mm Thread)	75	3
1213-065-080	6.5mm Cancellous Screw (16mm Thread)	80	3
1213-065-085	6.5mm Cancellous Screw (16mm Thread)	85	3
1213-065-090	6.5mm Cancellous Screw (16mm Thread)	90	3
1213-065-095	6.5mm Cancellous Screw (16mm Thread)	95	3
1213-065-100	6.5mm Cancellous Screw (16mm Thread)	100	3
1213-065-105	6.5mm Cancellous Screw (16mm Thread)	105	3
1213-065-110	6.5mm Cancellous Screw (16mm Thread)	110	3
1213-065-115	6.5mm Cancellous Screw (16mm Thread)	115	1
1213-065-120	6.5mm Cancellous Screw (16mm Thread)	120	1
1213-065-125	6.5mm Cancellous Screw (16mm Thread)	125	1
1214-065-040	6.5mm Cancellous Screw (32mm thread)	40	1
1214-065-045	6.5mm Cancellous Screw (32mm thread)	45	1
1214-065-050	6.5mm Cancellous Screw (32mm thread)	50	1
1214-065-055	6.5mm Cancellous Screw (32mm thread)	55	1
1214-065-060	6.5mm Cancellous Screw (32mm thread)	60	1
1214-065-065	6.5mm Cancellous Screw (32mm thread)	65	1
1214-065-070	6.5mm Cancellous Screw (32mm thread)	70	2
1214-065-075	6.5mm Cancellous Screw (32mm thread)	75	2
1214-065-080	6.5mm Cancellous Screw (32mm thread)	80	2
1214-065-085	6.5mm Cancellous Screw (32mm thread)	85	2
1214-065-090	6.5mm Cancellous Screw (32mm thread)	90	2
1214-065-095	6.5mm Cancellous Screw (32mm thread)	95	2
1214-065-100	6.5mm Cancellous Screw (32mm thread)	100	2
1214-065-105	6.5mm Cancellous Screw (32mm thread)	105	2
1214-065-110	6.5mm Cancellous Screw (32mm thread)	110	2
1214-065-115	6.5mm Cancellous Screw (32mm thread)	115	1
1214-065-120	6.5mm Cancellous Screw (32mm thread)	120	1
1214-065-125	6.5mm Cancellous Screw (32mm thread)	125	1
1901-69	Large Washer		6
470490	BioDrive 6.5mm Cannulated Screws-Case Only		1

7.5mm Screws

BioDrive 7.5mm (Fully Threaded and 16mm Thread) Cannulated Screws

Code	Description	Length	Quantity
470494	BioDrive 7.5mm (Fully Threaded & 16mm Thread) Cannulated Screws - Complete Set		
1211-075-030	7.5mm Cancellous Screw (Full thread)	30	1
1211-075-035	7.5mm Cancellous Screw (Full thread)	35	1
1211-075-040	7.5mm Cancellous Screw (Full thread)	40	1
1211-075-045	7.5mm Cancellous Screw (Full thread)	45	1
1211-075-050	7.5mm Cancellous Screw (Full thread)	50	1
1211-075-055	7.5mm Cancellous Screw (Full thread)	55	1
1211-075-060	7.5mm Cancellous Screw (Full thread)	60	1
1211-075-065	7.5mm Cancellous Screw (Full thread)	65	1
1211-075-070	7.5mm Cancellous Screw (Full thread)	70	1
1211-075-075	7.5mm Cancellous Screw (Full thread)	75	1
1211-075-080	7.5mm Cancellous Screw (Full thread)	80	1
1211-075-085	7.5mm Cancellous Screw (Full thread)	85	1
1211-075-090	7.5mm Cancellous Screw (Full thread)	90	1
1211-075-095	7.5mm Cancellous Screw (Full thread)	95	1
1211-075-100	7.5mm Cancellous Screw (Full thread)	100	1
1211-075-105	7.5mm Cancellous Screw (Full thread)	105	1
1211-075-110	7.5mm Cancellous Screw (Full thread)	110	1
1211-075-115	7.5mm Cancellous Screw (Full thread)	115	1
1211-075-120	7.5mm Cancellous Screw (Full thread)	120	1
1211-075-125	7.5mm Cancellous Screw (Full thread)	125	1
1213-075-030	7.5mm Cancellous Screw (16mm Thread)	30	1
1213-075-035	7.5mm Cancellous Screw (16mm Thread)	35	1
1213-075-040	7.5mm Cancellous Screw (16mm Thread)	40	1
1213-075-045	7.5mm Cancellous Screw (16mm Thread)	45	1
1213-075-050	7.5mm Cancellous Screw (16mm Thread)	50	1
1213-075-055	7.5mm Cancellous Screw (16mm Thread)	55	1
1213-075-060	7.5mm Cancellous Screw (16mm Thread)	60	2
1213-075-065	7.5mm Cancellous Screw (16mm Thread)	65	2
1213-075-070	7.5mm Cancellous Screw (16mm Thread)	70	2
1213-075-075	7.5mm Cancellous Screw (16mm Thread)	75	2
1213-075-080	7.5mm Cancellous Screw (16mm Thread)	80	2
1213-075-085	7.5mm Cancellous Screw (16mm Thread)	85	2
1213-075-090	7.5mm Cancellous Screw (16mm Thread)	90	2
1213-075-095	7.5mm Cancellous Screw (16mm Thread)	95	2
1213-075-100	7.5mm Cancellous Screw (16mm Thread)	100	2
1213-075-105	7.5mm Cancellous Screw (16mm Thread)	105	1
1213-075-110	7.5mm Cancellous Screw (16mm Thread)	110	1
1213-075-115	7.5mm Cancellous Screw (16mm Thread)	115	1
1213-075-120	7.5mm Cancellous Screw (16mm Thread)	120	1
1213-075-125	7.5mm Cancellous Screw (16mm Thread)	125	1
1901-69	Large Washer		6
470494	BioDrive 7.5mm Cannulated Screws-Case Only		1

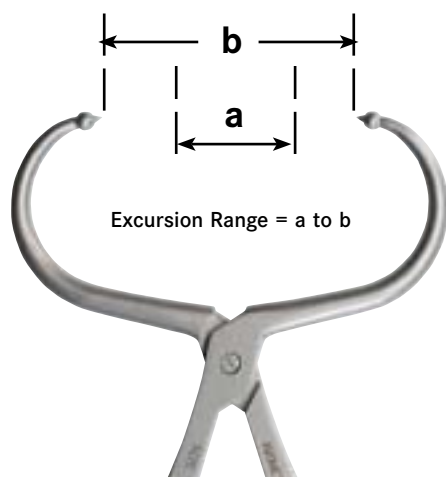
7.5mm Screws

BioDrive 7.5mm Cannulated Screws

Code	Description	Length	Quantity
470493	BioDrive 7.5mm Cannulated Screws - Complete Set		
1214-075-040	7.5mm Cancellous Screw (32mm Thread)	40	1
1214-075-045	7.5mm Cancellous Screw (32mm Thread)	45	1
1214-075-050	7.5mm Cancellous Screw (32mm Thread)	50	1
1214-075-055	7.5mm Cancellous Screw (32mm Thread)	55	1
1214-075-060	7.5mm Cancellous Screw (32mm Thread)	60	1
1214-075-065	7.5mm Cancellous Screw (32mm Thread)	65	1
1214-075-070	7.5mm Cancellous Screw (32mm Thread)	70	2
1214-075-075	7.5mm Cancellous Screw (32mm Thread)	75	2
1214-075-080	7.5mm Cancellous Screw (32mm Thread)	80	2
1214-075-085	7.5mm Cancellous Screw (32mm Thread)	85	2
1214-075-090	7.5mm Cancellous Screw (32mm Thread)	90	2
1214-075-095	7.5mm Cancellous Screw (32mm Thread)	95	2
1214-075-100	7.5mm Cancellous Screw (32mm Thread)	100	2
1214-075-105	7.5mm Cancellous Screw (32mm Thread)	105	2
1214-075-110	7.5mm Cancellous Screw (32mm Thread)	110	2
1214-075-115	7.5mm Cancellous Screw (32mm Thread)	115	1
1214-075-120	7.5mm Cancellous Screw (32mm Thread)	120	1
1214-075-125	7.5mm Cancellous Screw (32mm Thread)	125	1
1901-69	Large Washer		6
470492	BioDrive 7.5mm Cannulated Screws-Case Only		1

Mantis Tongs

Peri-articular reduction instruments



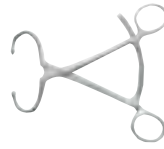
Many of the procedures that involve cannulated screws often require precise anatomical reduction prior to screw insertion. In addition certain procedures require easy access to the fracture site in order to perform an open reduction/internal fixation procedure. Standard reduction forceps often do not allow easy access to the fracture site and can be difficult to handle in complex situations. The family of Mantis Tongs has been designed to overcome these drawbacks.

- Non-slip heads provide secure grip.
- Curved mouth reduces soft-tissues damage and allows for improved surgical access by rotating the tongs.
- Five sizes provide a wide range of applications.
- Precision manufacturing gives you an extremely durable instrument.
- Easy grip handles improve control.
- Long ratchet allows reduction of a wide range of fractures.

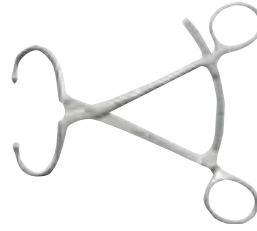
The five sizes are shown in the chart below that details possible sites of use (please note that the surgeon must select the appropriate instrument based on the patients specific anatomical characteristics).

Description	Size 5	Size 4	Size 3	Size 2	Size 1
Order Code	470215	470214	470213	470212	470211
Excursion Range (mm)	50-120	30-100	20-70	10-50	15-45
Site of Use					
Proximal Tibia	1	1			
Distal Tibia	1	1			
Distal Femur	1	1			
Distal Humerus		1	1		
Calcaneus		1	1		
Talus			1		
Distal Radius				1	1
Carpals				1	1
Tarsals				1	1
Metacarpals					1
Metatarsals					1

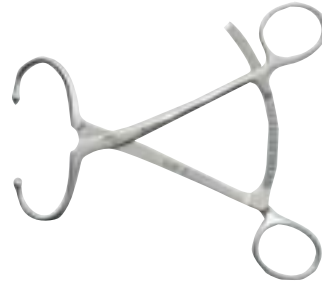
Description - Size 1
Code - 470211
Excursion Range 15 - 45mm



Description - Size 2
Code - 470212
Excursion Range 10 - 50mm



Description - Size 3
Code - 470213
Excursion Range 20 - 70mm



Description - Size 4
Code - 470214
Excursion Range 30 - 100mm



Description - Size 5
Code - 470215
Excursion Range 50 - 120mm



Description - Size 6
Code - 470217
Complete



